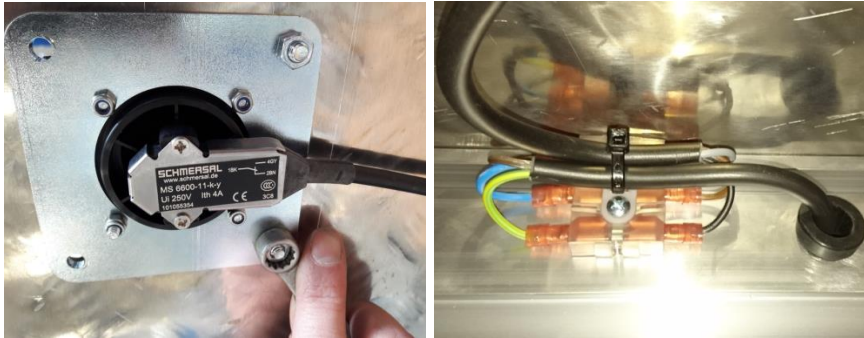


Instruction: How to exchange the round foot switch for the stainless steel foot switch

Please follow the steps below to exchange the round foot switch for the stainless steel foot switch.

Step 1 – remove the round foot switch

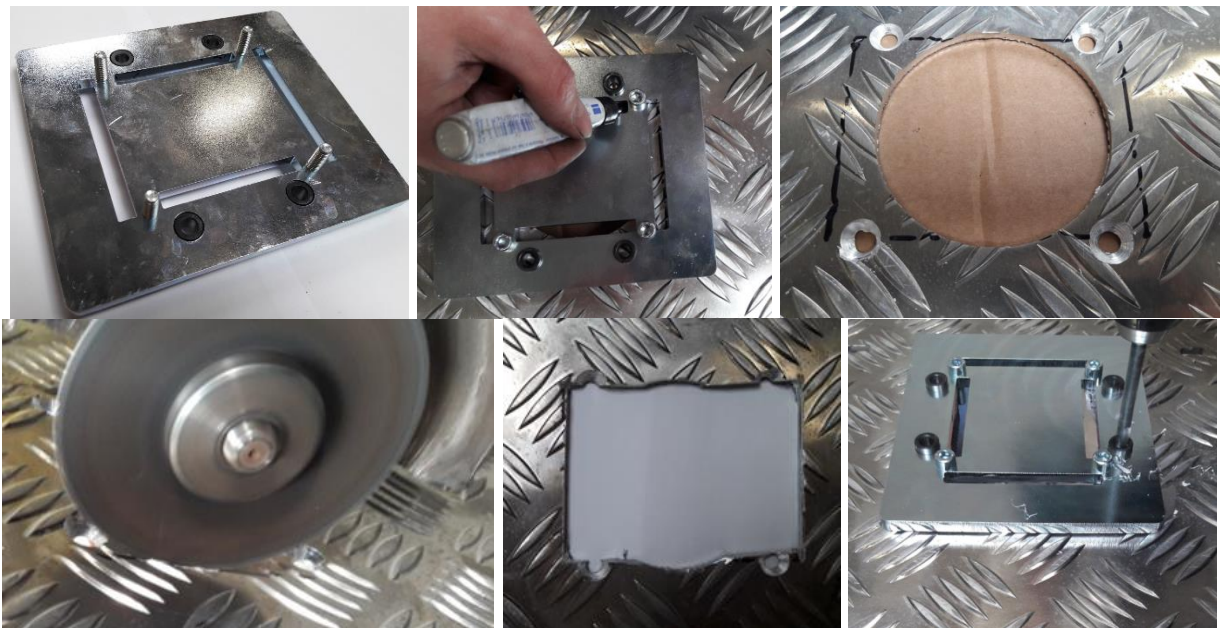
Turn off the trolley with main switch and remove 4 bolts from the platform and disconnect the cable from the footswitch.



Step 2 - cutting template

To fit the new foot switch, you need to cut a bigger hole and drill new holes for the bolts in the platform. Use the special cutting template to make the hole in the platform.

Article number: **3181.03.0000**



Step 3 – mount the footswitch

Please mount the new footswitch on the platform and use a Ty-Rap to fasten the cable.



Step 4

Disconnect the wires from the platform. Cut the fastons off the wires like the picture below.



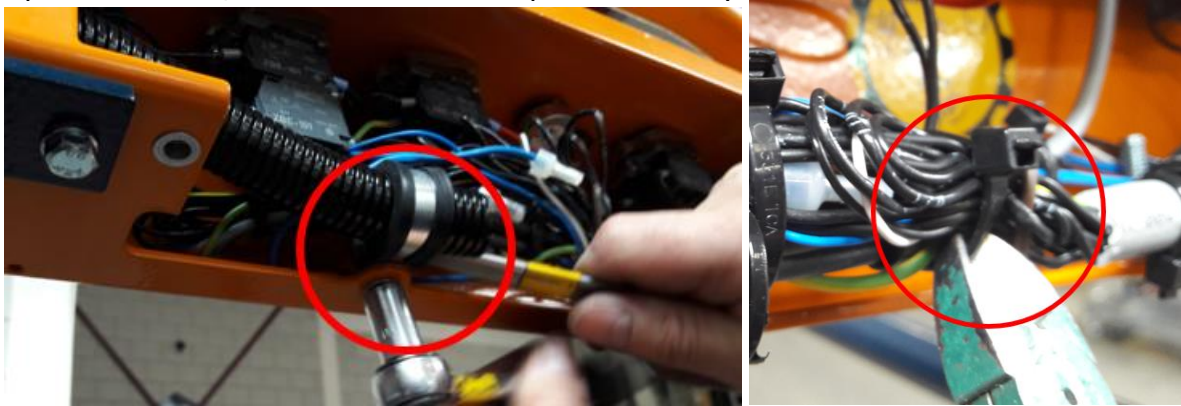
Step 5

Tape together the new and old foot switch cables. The cable runs through the platform, via the pipe of the fence support to the top in the console.



Step 6 – Open the console

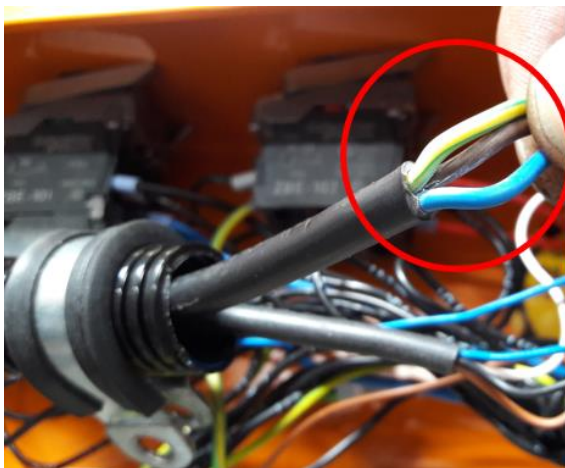
Open the console, unscrew the hose clamp and cut the Ty-rap, to loosen the PMA hose.



Step 7 – pull & push the new cable to the console

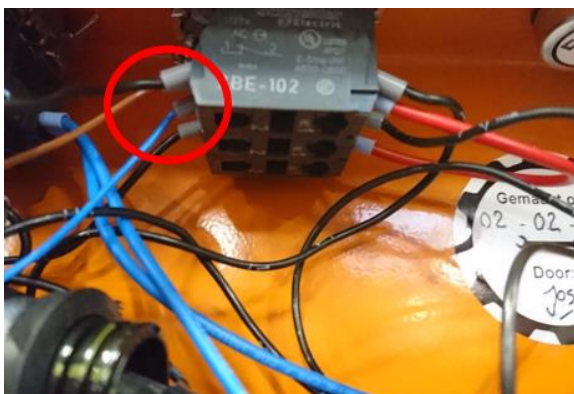
To pull the new wire up, you first have to find the old cable. Follow the wire that is connected to wire number 17 on the contact element from the emergency stop button to the cable. This is a two or three wired cable which comes out of the platform's hose (see picture below). This cable must be pulled upwards, until the cable of the new footswitch appears.

Please do this with two persons. A person to pull and one person to push the cable on the other side.



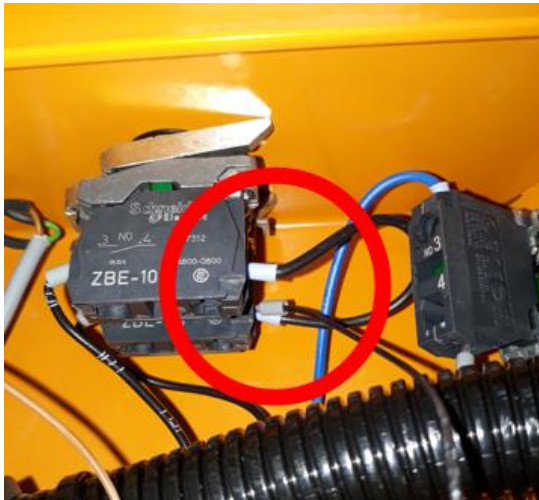
Step 8 – Connect the wire of the new footswitch

Then connect the blue wire of the new footswitch to wire number 17. And connect the brown wire from the same cable to wire number 3, as shown on the photo below.



Step 9

Connect the black wire of the new foot switch cable to the direction switch, as shown on the photo below.



Step 10

Cap the white wire from the footswitch with a wire connector.



Step 11 – Testing

Check that everything works.

Step 12 – Close the console

Bind the wiring and close the console.



See the attachment for the electrical diagram.

